

# 规格承认书

## APPROVAL SHEET

客户

**Customer :** \_\_\_\_\_

品名

**Product :** \_\_\_\_\_

料号

**Part No :** \_\_\_\_\_ WM0310001 \_\_\_\_\_

规格描述

**Specification :** \_\_\_\_\_

日期

**Date :** \_\_\_\_\_

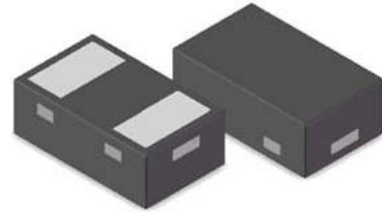
供应商确认 Provider Approval				客户确认 Customer Approval			
制作 Drawn	审核 Check	批准 Approval	送样日期 Date	核对 Check	审核 Check	批准 Approval	送样日期 Date
王凯	李德铨	韩兵					

零件承认后敬请回签一份，发给我司邮箱（sales@bljfuse.com）留存，或将承认后的封面传真（022-87820981分机825）至我司，谢谢！

## WM0310001

**ULTRA LOW CAPACITANCE  
BIDIRECTIONAL TVS DIODE****Features**

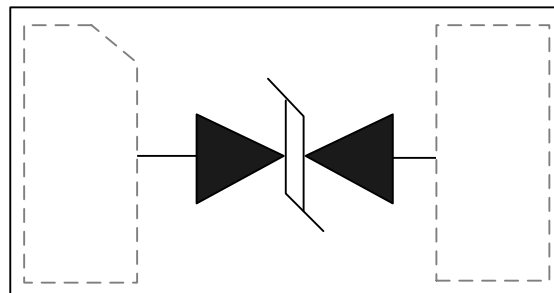
- 50Watts peak pulse power ( $t_p = 8/20\mu s$ )
- Bidirectional configurations
- Solid-state silicon-avalanche technology
- Low clamping voltage
- Low leakage current
- IEC 61000-4-2  $\pm 19kV$  contact  $\pm 19kV$  air
- IEC 61000-4-4 (EFT) 40A (5/50ns)
- IEC 61000-4-5 (Lightning) 7A (8/20 $\mu s$ )

**Applications**

- Cell Phone Handsets and Accessories
- Microprocessor based equipment
- Personal Digital Assistants (PDA' s)
- Notebooks, Desktops, and Servers
- Portable Instrumentation

**Mechanical Data**

- DFN1006 package
- Molding compound flammability rating: UL 94V-0
- Packaging: Tape and Reel
- RoHS/WEEE Compliant

**Schematic & PIN Configuration**

DFN1006

## Absolute Maximum Rating

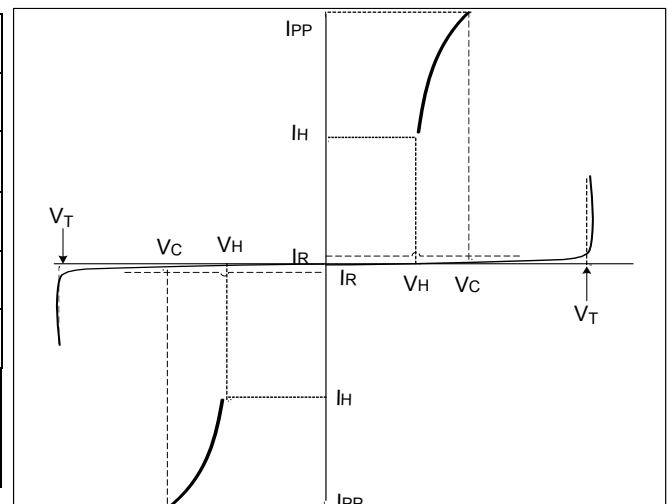
Rating	Symbol	Value	Units
Peak Pulse Power ( $t_p = 8/20\mu s$ )	$P_{PP}$	50	Watts
Peak Pulse Current ( $t_p = 8/20\mu s$ ) (note1)	$I_{pp}$	7	A
ESD per IEC 61000-4-2 (Air) ESD per IEC 61000-4-2 (Contact)	$V_{ESD}$	$\pm 19$ $\pm 19$	kV
Lead Soldering Temperature	$T_L$	260(10seconds)	$^{\circ}C$
Junction Temperature	$T_J$	-55 to + 125	$^{\circ}C$
Storage Temperature	$T_{stg}$	-55 to + 125	$^{\circ}C$

## Electrical Characteristics

Parameter	Symbol	Conditions	Min	Typical	Max	Units
Reverse Stand-Off Voltage	$V_{RWM}$				3.3	V
Holding Voltage	$V_H$	$I_T=I_H$	2.0		3.2	V
Holding Current	$I_H$		15			mA
Reverse Leakage Current	$I_R$	$V_{RWM}=3.3V, T=25^{\circ}C$			500	nA
Clamping Voltage	$V_C$	$I_{PP}=7A, t_p=8/20\mu s$		6.2	7.5	V
Trigger Voltage	$V_T$		8		16	V
Junction Capacitance	$C_j$	$V_R = 0V, f = 1MHz$		0.65		pF

## Electrical Parameters (TA = 25°C unless otherwise noted)

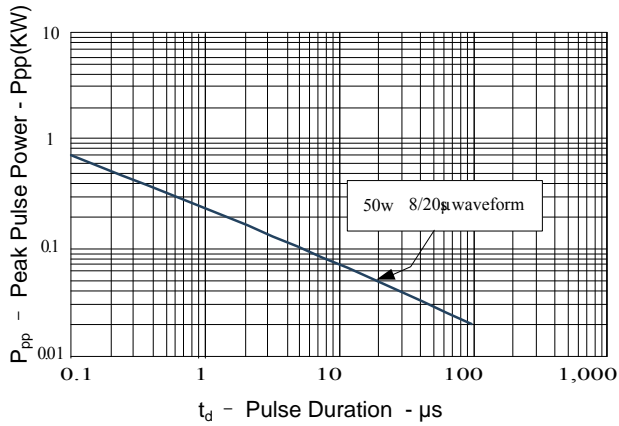
Symbol	Parameter
$I_{PP}$	Maximum Reverse Peak Pulse Current
$V_C$	Clamping Voltage @ $I_{PP}$
$I_R$	Maximum Reverse Leakage Current @ $V_{RWM}$
$V_T$	Trigger voltage
$I_T$	Test Current
$V_H$	Holding voltage
$I_H$	Holding Current



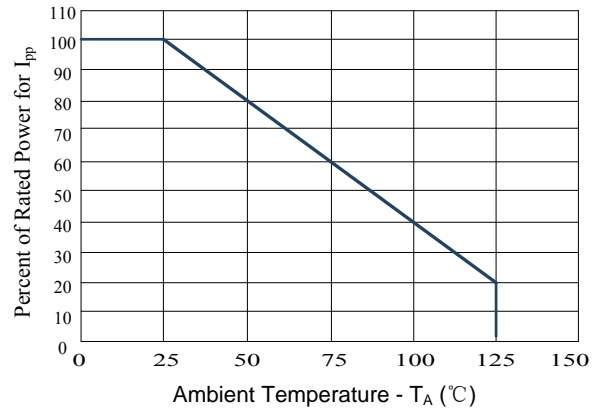
Note.: 8/20 $\mu s$  pulse waveform.

## Typical Characteristics

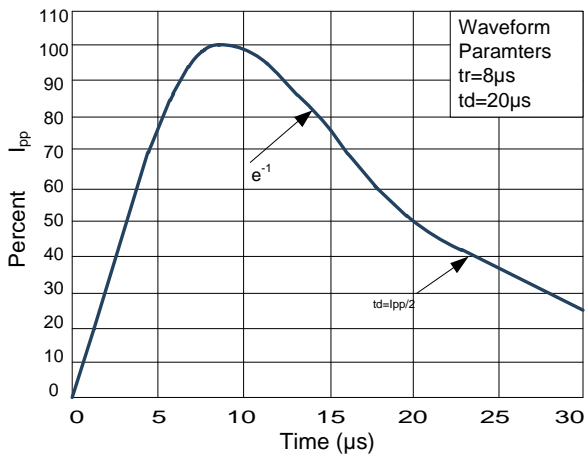
**Figure 1: Peak Pulse Power vs. Pulse Time**



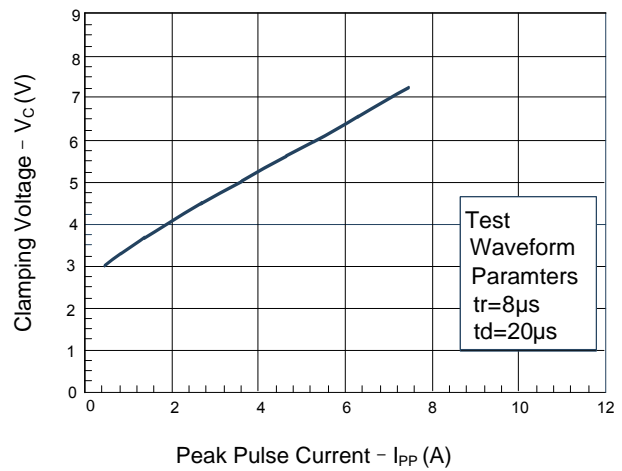
**Figure 2: Power Derating Curve**



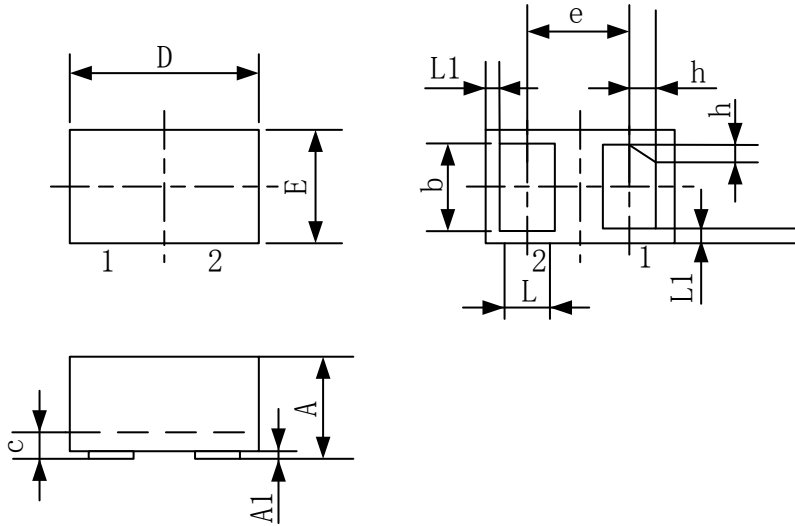
**Figure3: Pulse Waveform**



**Figure 4: Clamping Voltage vs. I<sub>pp</sub>**

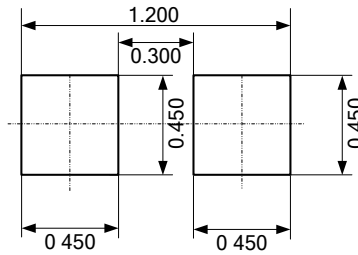


## Outline Drawing – DFN1006



SYMBOL	MILLIMETER		
	MIN	NOM	MAX
A	0.40	0.50	0.55
A1	0	0.02	0.05
b	0.45	0.50	0.55
c	0.12	0.15	0.18
D	0.95	1.00	1.05
e	0.65BSC		
E	0.55	0.60	0.65
L	0.20	0.25	0.30
L1	0.05REF		
h	0.07	0.12	0.17
载体尺寸 (MIL)	20*20		

## Land Pattern



## Ordering information

Order code	Package	Base qty	Delivery mode	Marking code
WM0310001	DFN1006	10k	Tape and reel	L1